

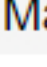



◀ ALL HOME FURNISHINGS


A Minimal Lamp Inspired By A Single Line

11.17.16  Posted by Nanette Wong  Home Furnishings  Main
[VIEW PHOTO GALLERY](#)

Share This Article

 SHARE

 TWEET

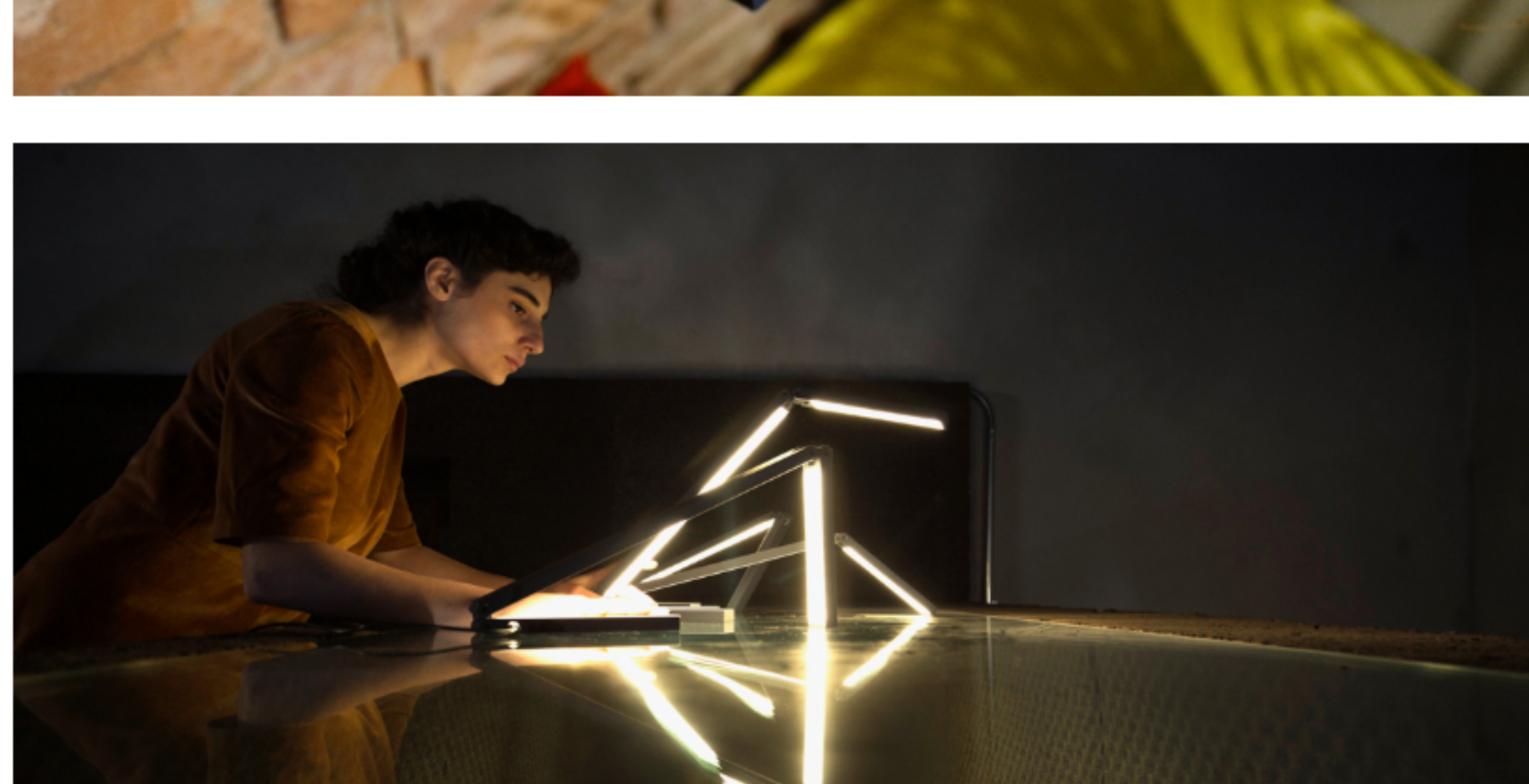
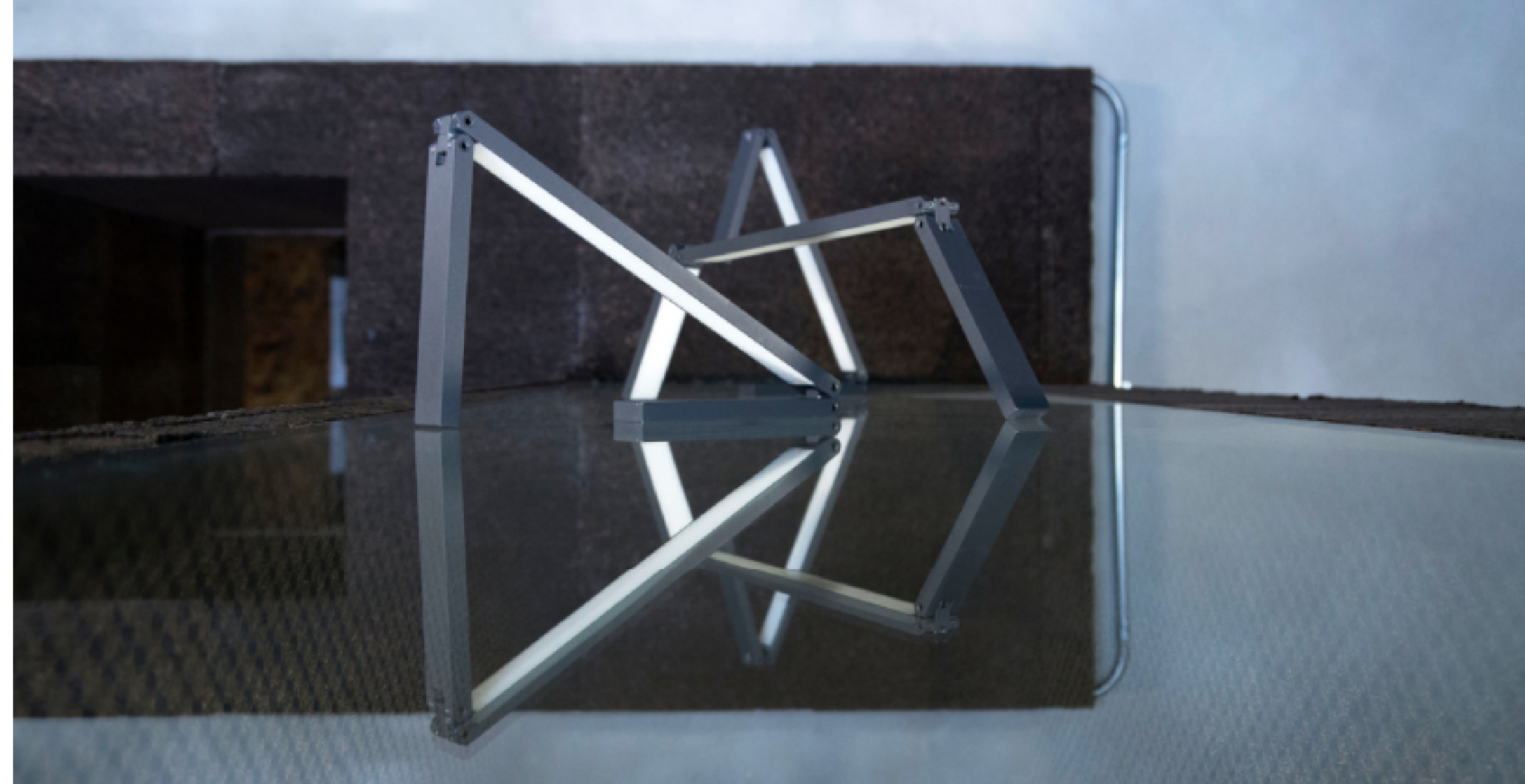
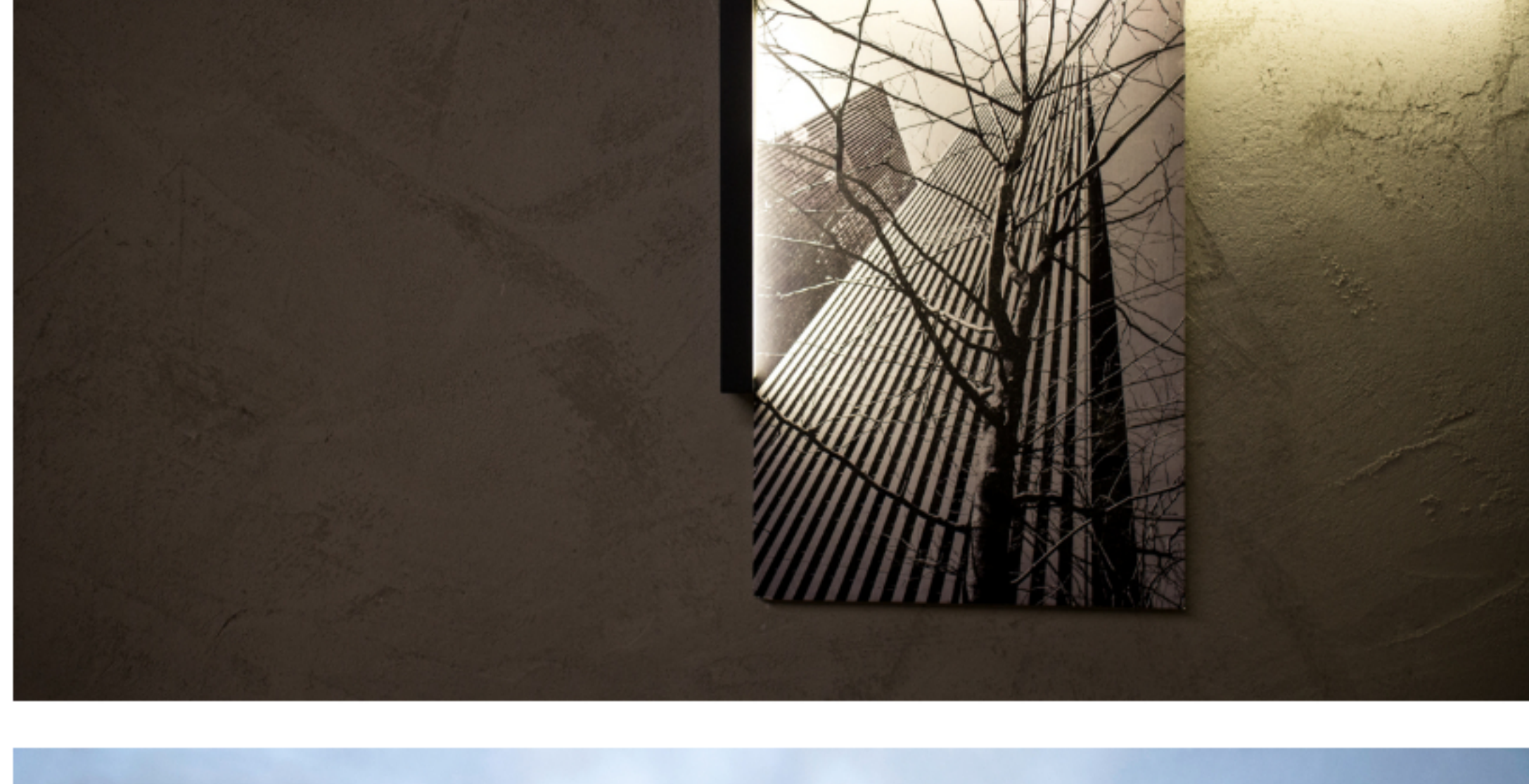
 PIN

 SUBMIT

A lamp doesn't get more minimal than LIMINAL (try saying that 5 times fast). The lamp came about as part of a collaboration between CNVS, ATÖLYE Labs' furniture brand, and architect/artist Buğra Tunç, and is a study in minimalism and multifunctionality. Due to its kinetic joints and adjustable modules, this simple lamp is flexible, both physically and usage-wise.



The lamp is inspired by a single line. The lamp itself is a long line, that has light sources on both sides, and can fold up into itself. It has a three-scenario switch that's combined with its kinetic framework, making it able to adapt and shape to the user's aesthetic desires. What is most intriguing though is its ability to blend into the environment—at times it even seems invisible. LIMINAL is made out of aluminum and stainless steel joints.




Share This Article

 SHARE

 TWEET

 PIN

 SUBMIT

 [CLICK TO VIEW COMMENTS](#)